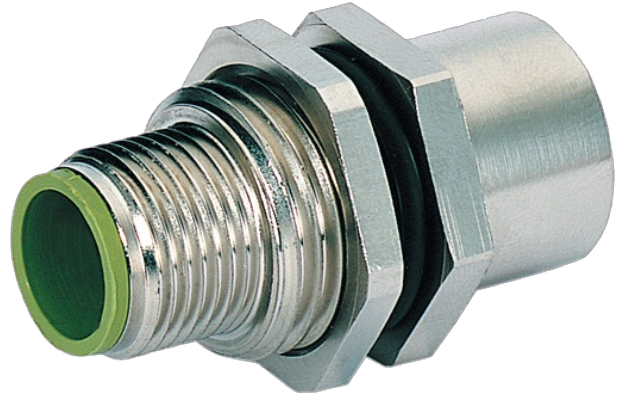


M12-PANEL FEED THROUGH A-CODED

Control cabinet entry system
 Male - female
 M12, 5-pole
 A-coded
 shielded

Illustration

Product may differ from Image

Form

Form 42111

General data

Pollution Degree 2
 Mounting set M16×1.5 mm
 Temperature range -25...+85 °C

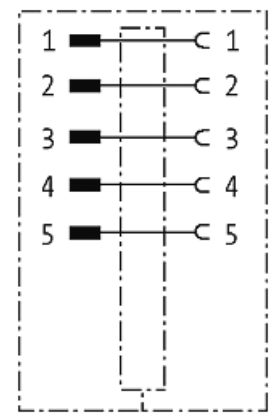
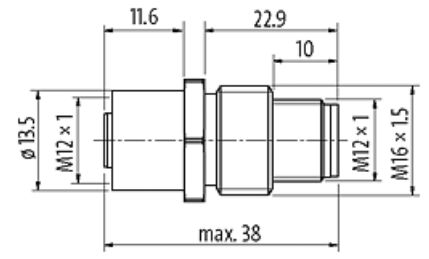
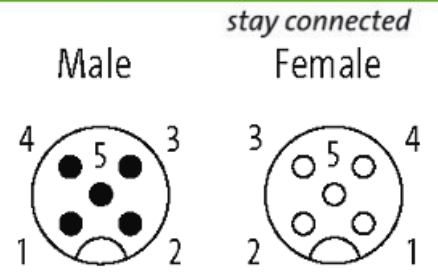
Technical Data

Operating voltage max. 60 V AC/DC
 Rated surge voltage 1.5 kV
 Operating current per contact max. 4 A
 Material group IEC 60664-1, category I
 Coding A-coded
 Locking of ports Screw thread (M12×1 mm) recommended torque 0.6 Nm, self-securing
 Protection IP65 and IP67 when plugged and screwed down (EN 60529)
 Material Brass, nickel plated

Commercial data

country of origin CZ
 customs tariff number 85366990
 EAN 4048879143233
 eClass 27143423
 Packaging unit 1

Sketch



Product may differ from Image